

The walking trolley: your best ally on the Way

(Machine Translated by Google)



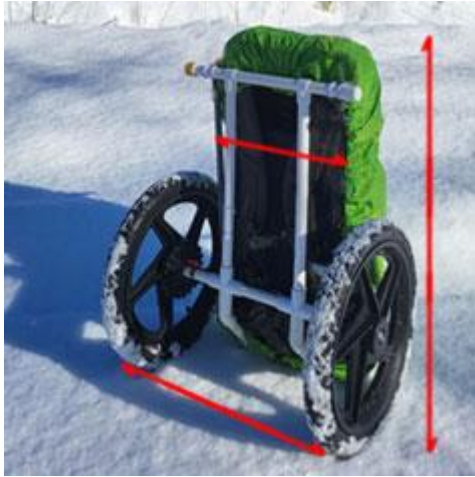
Walk light... without leaving anything behind. That's the promise of this walking trolley designed specifically to carry your backpack throughout your journey.

Designed to offer a smooth and quiet ride, this trolley significantly reduces the load on your shoulders and back, allowing you to conserve your energy... and your enjoyment of walking.

Solid, reliable and designed for long distances, it transforms your experience: you walk freely, your equipment accompanies you effortlessly.

Because on the Way, every step counts

General characteristics



Height: 24 inches / 61 centimeters
Maximum bag width: 14 inches / 36 centimeters
Width with wheels: 20 inches / 51 centimeters
Wheel diameter: 16 inches / 41 centimeters
Weight: 8 pounds / 3.6 kilograms

A PVC frame

Her **PVC frame** 100% recyclable, both robust and surprisingly lightweight, it offers excellent resistance to weathering and temperature variations. It is unaffected by rain or road dust, while remaining easy to handle and maintain.

One of the great advantages of **PVC frame** lies in its shock absorption capacity. Unlike aluminum, which can be **permanently deform** when crushed or strongly compressed, PVC **resumes its initial form** guaranteeing a durable and reliable structure throughout your journey.

Polycarbonate wheels

His **large 16-inch polycarbonate wheels** These wheels are a real technical advantage. Their generous diameter allows them to easily overcome uneven terrain (gravel, forest paths, secondary roads). The integrated ball bearings ensure smooth and stable rolling, reducing the effort required to move the cart forward, even when loaded, and protecting your arms and shoulders.

Unlike metal, which **can corrode** when exposed to water, mud, or moisture, polycarbonate, They do not rust. It remains intact and functional under all conditions.

PETG protective plate

A transparent sheet made of PETG (polyethylene terephthalate glycol) is screwed directly onto the chassis, for **protect your bag from splashes and mud**. Thanks to its rigidity and lightness, it acts as stable protection without adding unnecessary weight, resists impacts well without cracking and remains easy to clean.

Using the trolley

Monchariot It was designed to be pushed or pulled and can also be converted into a backpack when the terrain becomes too steep. **Paired with your walking sticks**, it has the advantage of adapting to your size, thus offering a custom fit.

Place your poles on the cart

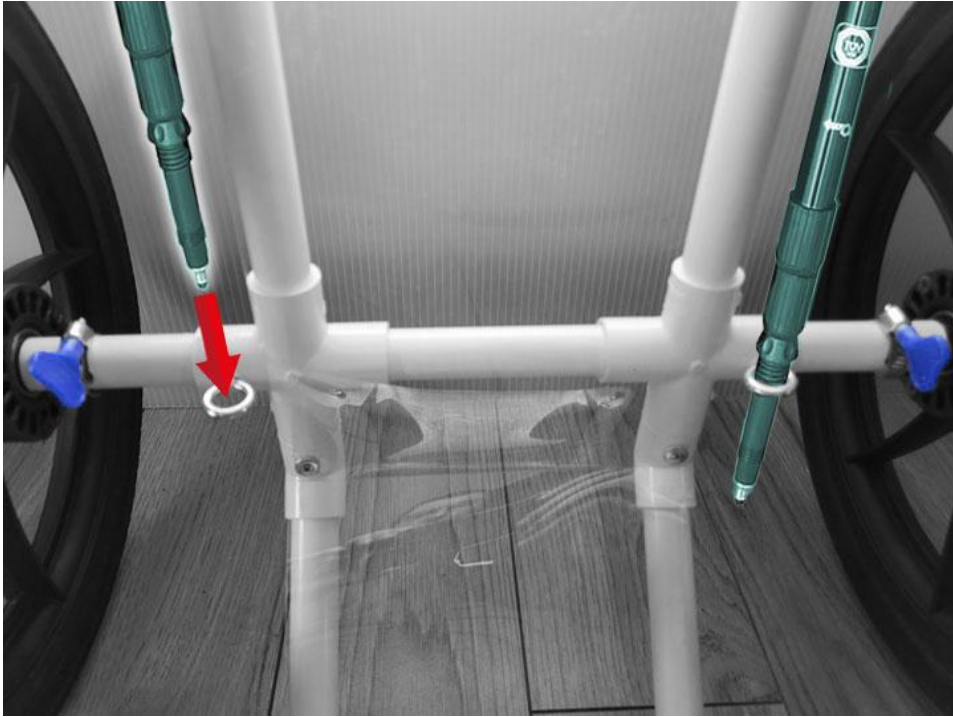
1. Keep the yellow pouch containing the ball elastics, blue elastic straps, red waist strap and rain cover handy.



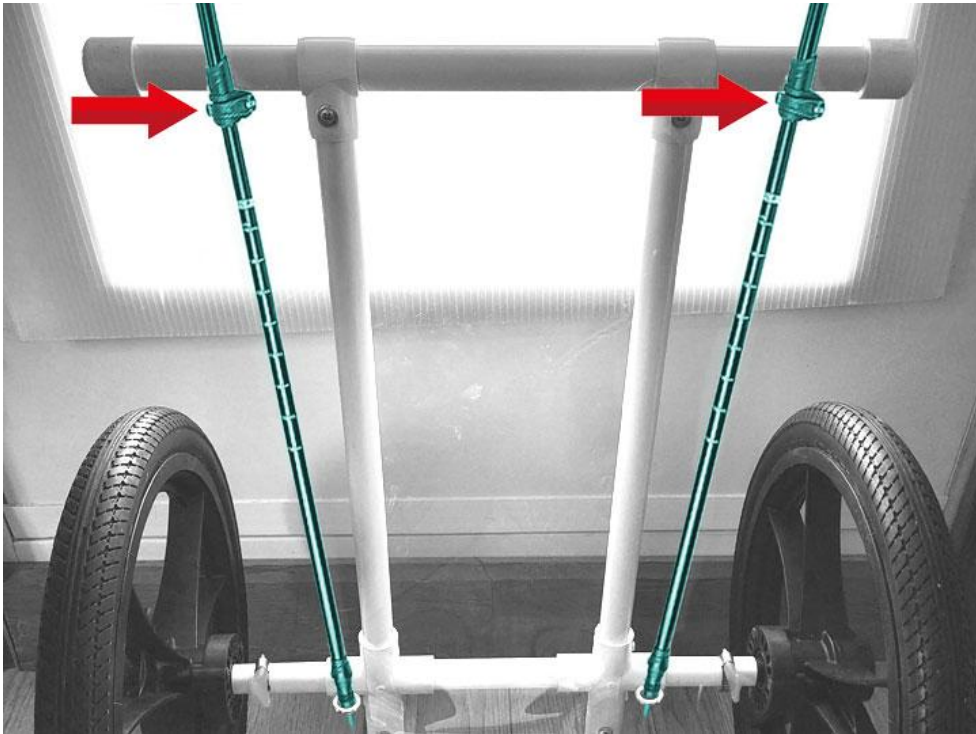
2. Remove the protectors, tips or washers from the tips of your poles so that only the tip remains.



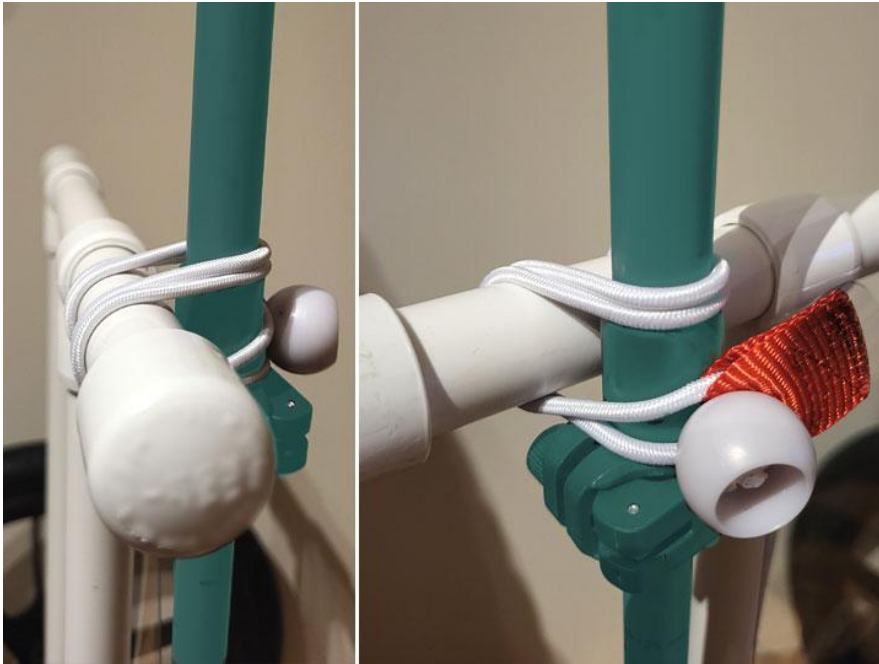
3. Insert the tips of the poles into the rings located on the wheel axle. (Inner diameter of the rings: ½ inch / 1.27 centimeters).



4. Extend the first part of your walking poles to position the pole locking system just below the top tube of the trolley.



5. Attach the sticks to the tube with the ball elastics. Press the stick against the tube, place the elastic against the stick and go around it, passing over the tube and back to attach it at the front, passing under the tube.



6. You can adjust **the height** of the poles **with the pole locking system** and **change the spacing** of the poles by **sliding them along the top tube** of the trolley so they fit comfortably around your waist.



There you go, your cart is ready! 😊

All you have to do is attach your backpack using the two blue elastic straps.



Walking trolley rental

The Chemin des Sanctuaires, offers a walking trolley rental service that will allow you to transport your backpack by yourself.

Rental price: \$5 per day. (\$90 for the full 18-day course, \$45 for a half 9-day course). The trolley will be given to you at the start and must be left in the designated place upon arrival.

For more information: <https://www.chemindessanctuaires.org/monchariot/?lang=en-US>

Four ways to use your walking cart depending on the terrain and your needs

The walking trolley we offer has been designed to adapt to all types of terrain, optimizing your comfort and energy. Thanks to its versatility, your trolley adapts to any situation on the path.

Depending on the terrain, obstacles, or your preferences, you can use your cart to **four different ways**:



1) Push the cart in front of you

On a **flat or gently sloping terrain**, as well as for **go down the stairs** It is often more comfortable to **push the cart in front of you**.

This position allows for natural progression, good visibility of the path, and smooth guidance of the large wheels on regular surfaces.

Video of Carla easily descending the stairs in Mount Royal Park in winter.

<https://youtube.com/shorts/yJCMOR0BHm0?feature=share>



2) Pull the cart behind you

On a rough or uphill terrain, pulling the cart behind you is generally more stable and less tiring.

This mode allows you to keep your center of gravity forward, **facilitates the passage of obstacles** and offers better control when the terrain becomes demanding or when it is necessary **climbing stairs**.



3) Pull the cart

To keep **hands free** or use another pair of poles to help you on rough terrain, you can **pull the cart by attaching the walking sticks to the waist strap**.

This configuration is ideal for long walks, as it reduces the perceived load on your shoulders while maintaining good walking dynamics.



4) Carry the cart and bag on your back

If you need to **manual carrying**, for example, to cross a narrow or difficult passage, it is possible **to attach the backpack the other way around** (the straps opposite the frame) and carry the whole thing on your back like a traditional bag.

The trolley then transforms into a practical backup solution, without any additional bulky load.

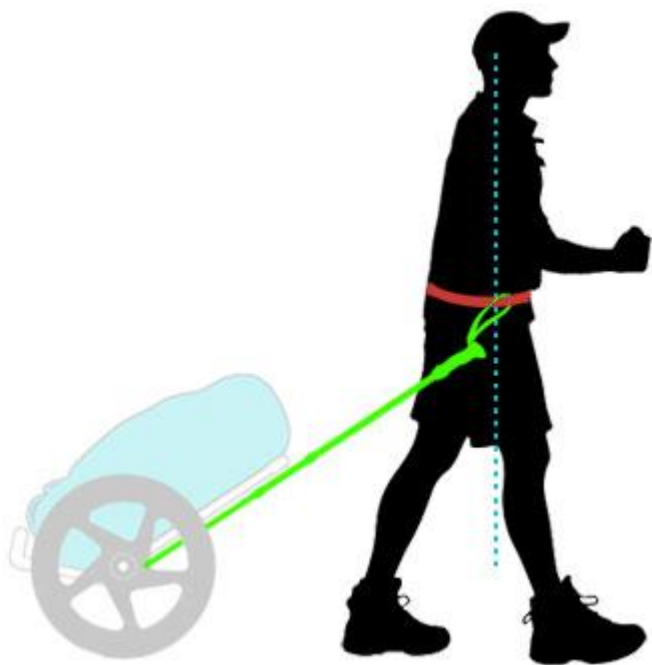
Configuration for carry the cart and bag on your back

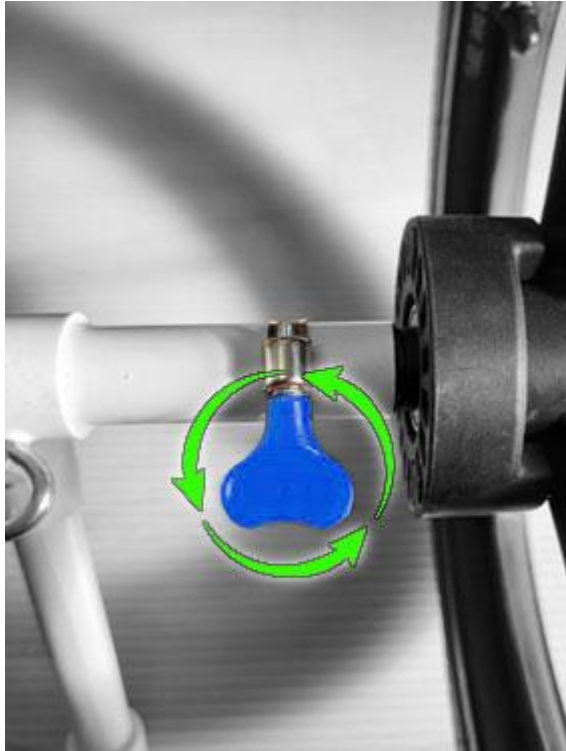
- a) Detach the walking sticks.
- b) Detach the two blue elastic straps.
- c) Turn the backpack around so that the straps are facing outwards.
- d) Attach the bag to the frame with the two blue elastic straps, taking care to leave the shoulder straps free.
- e) Pass the red waist strap up and down around the bag and frame.
- f) Your trolley is ready to be carried.



Tips and tricks

Pulling the cart - To prevent the pole straps from slipping backwards when pulling the cart, loop the red strap around the strap before attaching it to your waist, then fasten the strap by placing the pole straps IN FRONT of your hips (blue dotted line in the image).





Remove and reinstall the wheels

Sometimes, for transport purposes, it is necessary to remove the wheels.

To remove the wheels, loosen the ring slightly with the red wing screw and remove the wheel.

To refit the wheels, fully insert the wheel axle into the tube and tighten the ring with the blue wing screw.

